

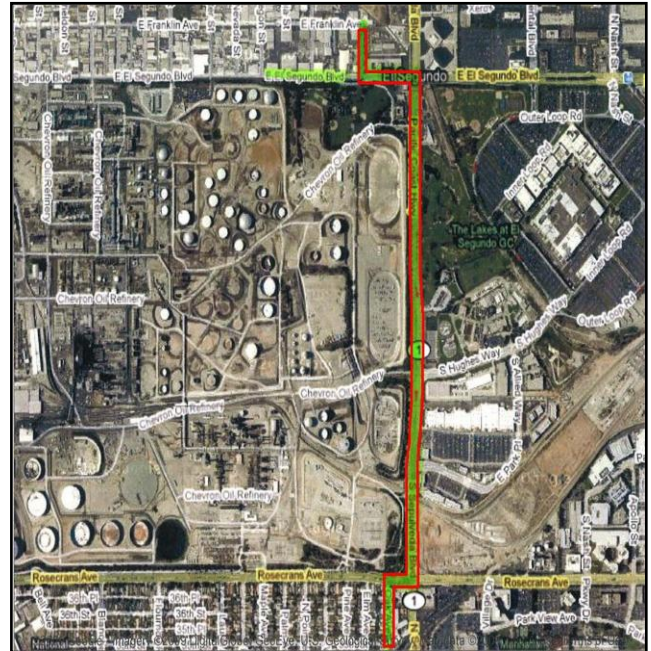
NOTICE OF CONSTRUCTION

Project Start Date: July 26, 2009

Scheduled Completion: November 26, 2009

Installation of a Telemetry System along Illinois Street, El Segundo Blvd., Sepulveda Blvd. and Oak Street in the City of El Segundo

The County of Los Angeles Department of Public Works has awarded Steiny and Company, Inc., a construction contract to install a telemetry system for the West Coast Basin Barrier Project (WCBBP) from the City of Torrance to the City of El Segundo. The telemetry system is a state of the art technology that allows for remote monitoring and data collection along the seawater barrier. The project consists of installing two - 2" PVC conduits and pull boxes for the installation of communication equipment and electrical power. The WCBBP has been in operation since 1951 and continuously injects fresh water into groundwater aquifers to prevent them from being contaminated by seawater. Once installed, the telemetry system will collect more accurate and timely data. The data will then be transmitted directly to Public Works' headquarters building in real time where engineers can evaluate the operations and improve efficiencies.



Impacted Area

Within the City of El Segundo, it is anticipated the project will take approximately four months to complete. In general the majority of the work is located within the Chevron Refinery alongside of Sepulveda Blvd. (between El Segundo Blvd and Rosecrans Avenue). If more detailed construction schedule information is required or if you have any other questions about the project, please contact Mr. Victor Bermudez of the County of Los Angeles Department of Public Works at (626) 688-8275 or Telecommunications Device for the Deaf (TDD) at (626) 282-7829 (refer to Project ID WRDW000003 - West Coast Basin Barrier Project Telemetry System Phase 1). Our office hours are from 7:00 a.m. to 5:30 p.m., Monday through Thursday. The Contractor will be permitted to work from 7:30 am to 5:00 pm on weekdays in order to assure completion of the project on time. A County Public Works inspector will be on the site during construction and will be available to provide you with more information about the project.

TRAFFIC AND PARKING INFORMATION

Construction activities may result in temporary traffic and parking restrictions which are unavoidable due to the nature of the work. If necessary, parking prohibitions will be posted 72 hours prior to the affected date. Access to your property will be provided by the contractor. There may be short periods (generally less than 1-hour) when it is impractical to provide property access. We will attempt to minimize any inconvenience caused by the construction, and we ask for your understanding and cooperation.